

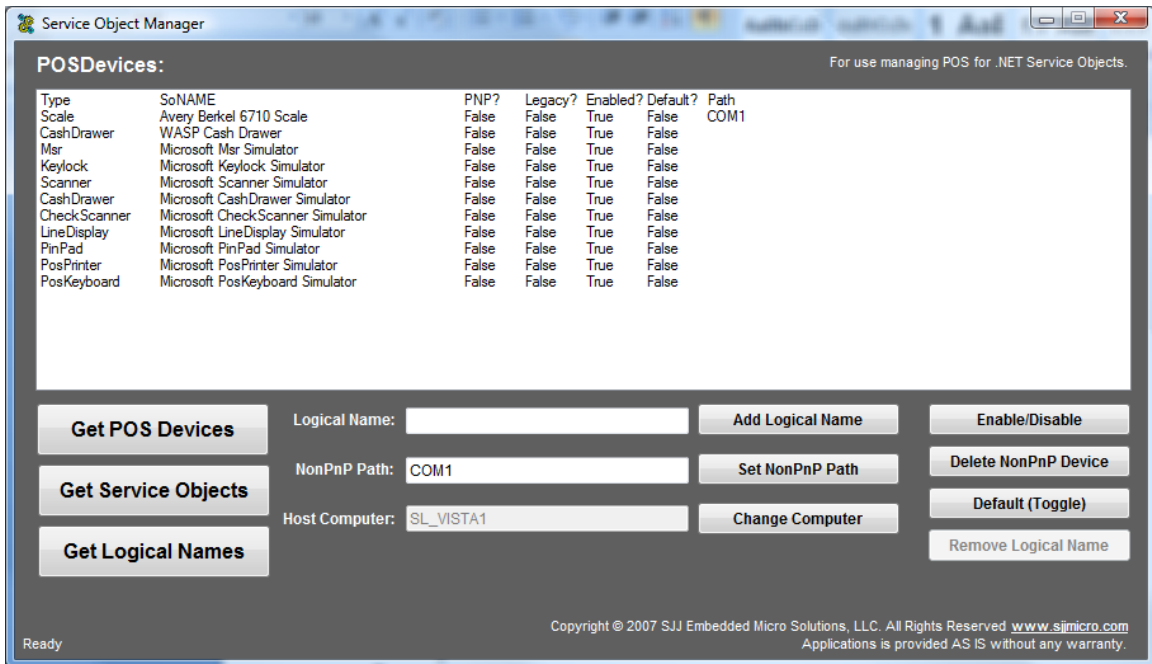
## Avery Berkel 6710 Scale Service Object Overview

The ABScaleSO.dll is for use with the Avery Berkel (Weigh-Tronix) 6710 POS Scale. The service object has been designed to work from any COM port. SOManager or POSDM.EXE must be used to setup the service object hardware path.

**Note:** The service object and application source code are provided as is without any warranty.

### Instructions:

1. Make sure POS for .NET 1.11 is installed on the system.
2. **Download** the ZIP file containing the ABScaleSO.dll service object.
3. **Extract** the contents of the ZIP file to your hard drive.
4. **Copy** the ABScaleSO.DLL to the C:\Program Files\Common Files\Microsoft Shared\Point Of Service\Control Assemblies folder.
5. **Use** SOManager to setup the service object's COM port path. Use COM# for the path. i.e. COM1



6. The sample application, ScaleTest2.EXE, can be used to test the SO.

For any questions, please contact us at [www.sjjmicro.com](http://www.sjjmicro.com) / [support@sjjmicro.com](mailto:support@sjjmicro.com).